



A division of CIRCOR International, Inc.

# Application Guide

SPENCE ENGINEERING COMPANY, INC. 150 GOLDENHAM ROAD, WALDEN, NY 12586-2035

D36 WATER  
PRESSURE

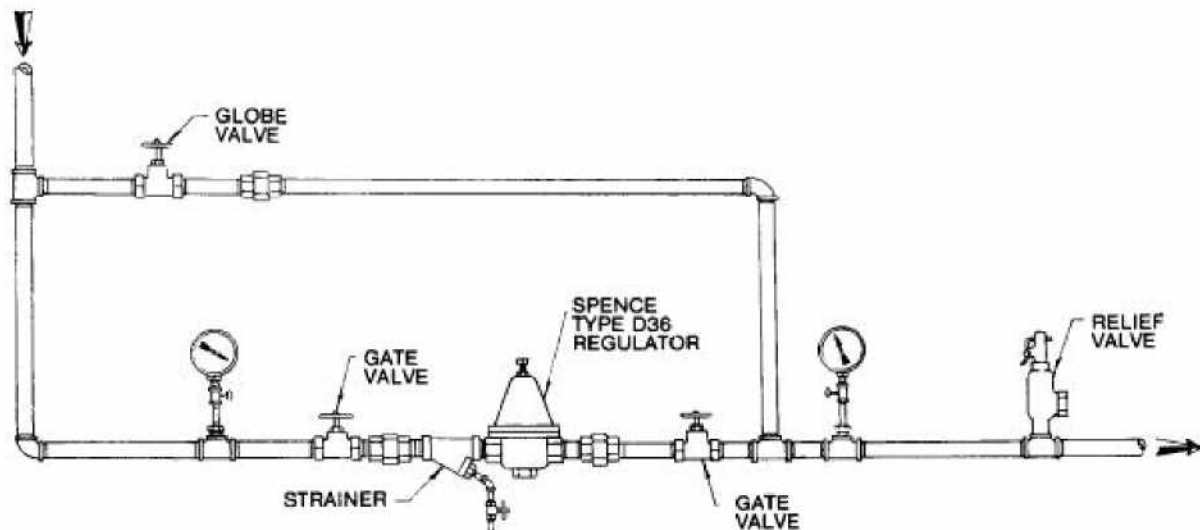
## TYPE D36 WATER PRESSURE REDUCING VALVE

### APPLICATION:

Designed for liquid pressure reduction, where very fast reaction to intermittent flows or rapid changes are a system requirement.

### OPERATION:

Valve is opened by compressing adjusting spring. Downstream pressure acts against adjusting spring, and pressure is set by increasing or decreasing spring pressure.



### ADVANTAGES:

- High capacity.
- Large sensitive diaphragm.
- Meets requirements of:
  - A.S.S.E Standard 1003.
  - Southern Standard Plumbing Code.
  - MIL Standard MILV-18146A, Type I.
  - I.A.P.M.O.
  - City of Los Angeles.
  - W.P.O.A. Uniform Plumbing Code.

APPLICATION GUIDE  
PRESS. REDUCING-LIQUID



# Application Guide

A division of CIRCOR International, Inc.

SPENCE ENGINEERING COMPANY, INC. 150 GOLDENHAM ROAD, WALDEN, NY 12586-2035

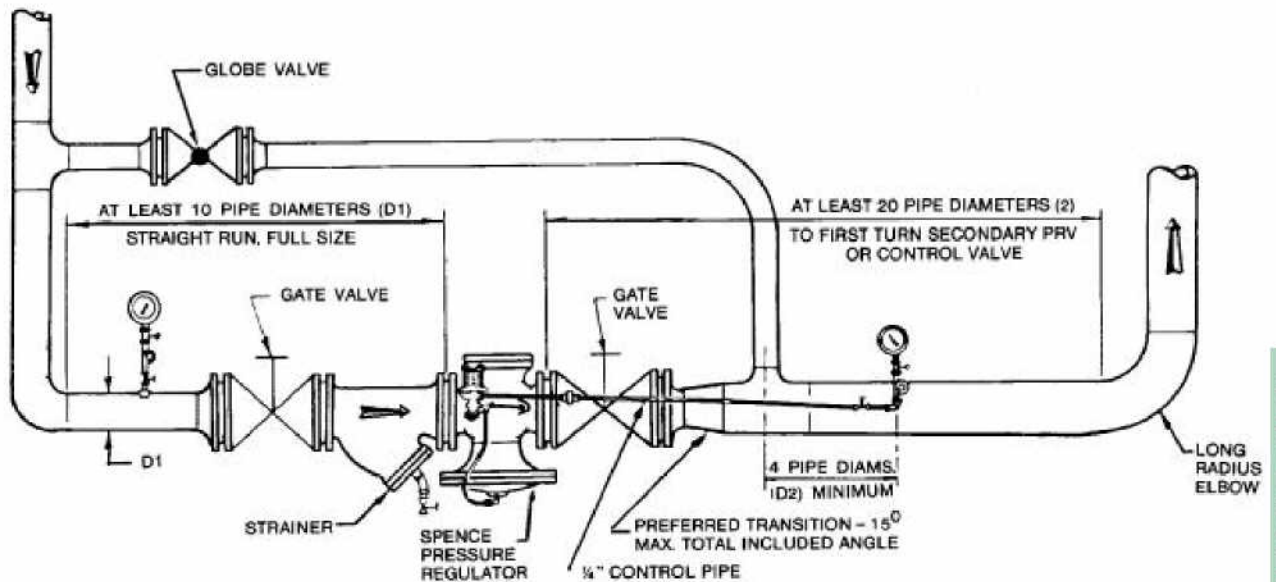
## TYPE C34D PILOT OPERATED PRESSURE REDUCING VALVE

### APPLICATION:

Designed to reduce a steady or varying inlet pressure to a constant, adjustable delivery pressure. Recommended for applications needing high accuracy of regulation, but with load changes not too violent for pilot operated valve.

### OPERATION:

Delivery pressure, acting on pilot diaphragm, throttles main valve to maintain set pressure.



### ADVANTAGES:

- Self Operated.
- Packless.
- High Capacity.