



# Application Guide

A division of CIRCOR International, Inc.

SPENCE ENGINEERING COMPANY, INC. 150 GOLDENHAM ROAD, WALDEN, NY 12586-2035

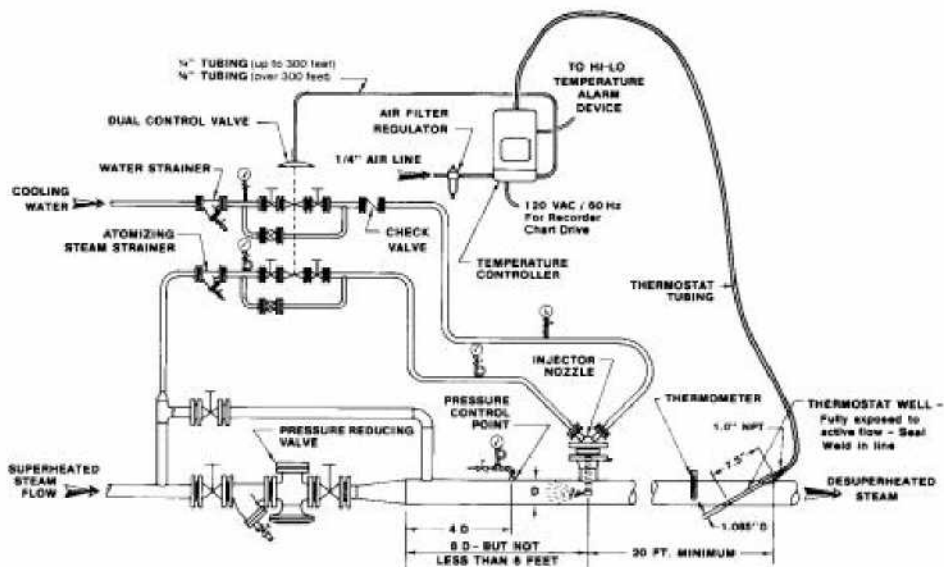
## STEAM ATOMIZING AIR OPERATED DESUPERHEATER

### APPLICATION:

Spence steam atomizing desuperheaters are designed to reduce and control the temperatures of superheated steam by the controlled injection of a cooling water mist.

### OPERATION:

Water and steam are injected into a superheated steam line through the injector nozzle. The nozzle is designed to break the water into a fine mist to be easily absorbed by the oncoming steam. The flow through the nozzle is controlled by the dual control valve, and a pneumatic temperature controller.



### ADVANTAGES:

- Unique Dual Control Valve.
- Complete package by Spence.
- Spence Pressure Reducing Valve available.
- Many sizes available.



# Application Guide

A division of CIRCOR International, Inc.

SPENCE ENGINEERING COMPANY, INC. 150 GOLDENHAM ROAD, WALDEN, NY 12586-2035

## STEAM ATOMIZING DIRECT OPERATED DESUPERHEATER

### APPLICATION:

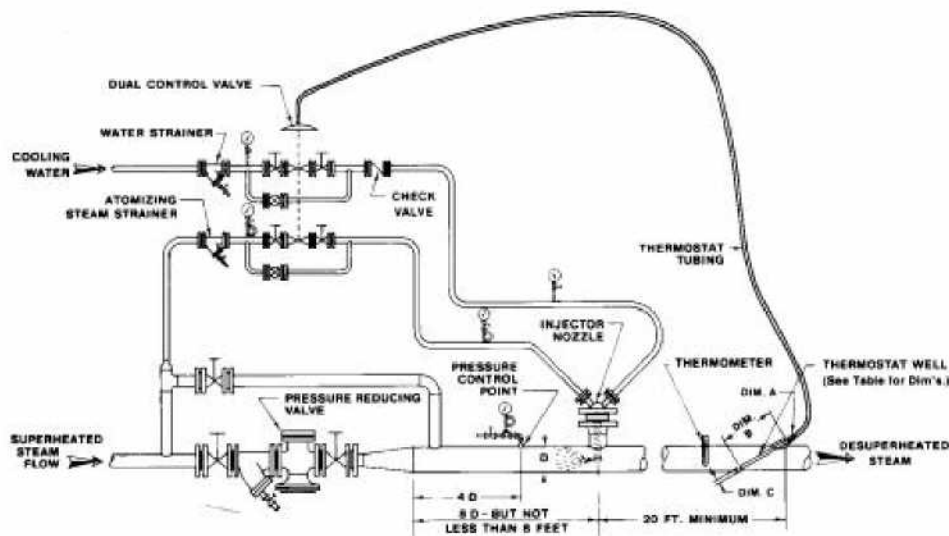
Spence steam atomizing desuperheaters are designed to reduce and control the temperature of superheated steam by the controlled injection of a cooling water spray.

### OPERATION:

Water and steam are injected into a superheated steam line through the injector nozzle. The nozzle is designed to break the water into a fine mist to be easily absorbed by the oncoming steam. The flow through the nozzle is controlled by the dual control valve, and a vapor tension type thermostat.

DESUPERHEATER  
DIRECT OP/STM ATOM

APPLICATION GUIDE  
OTHER PRODUCTS



### ADVANTAGES:

- Unique Dual Control Valve.
- Self contained - no air or electricity needed.
- Complete package by Spence.
- Many sizes available.



# Application Guide

A division of CIRCOR International, Inc.

SPENCE ENGINEERING COMPANY, INC. 150 GOLDENHAM ROAD, WALDEN, NY 12586-2035

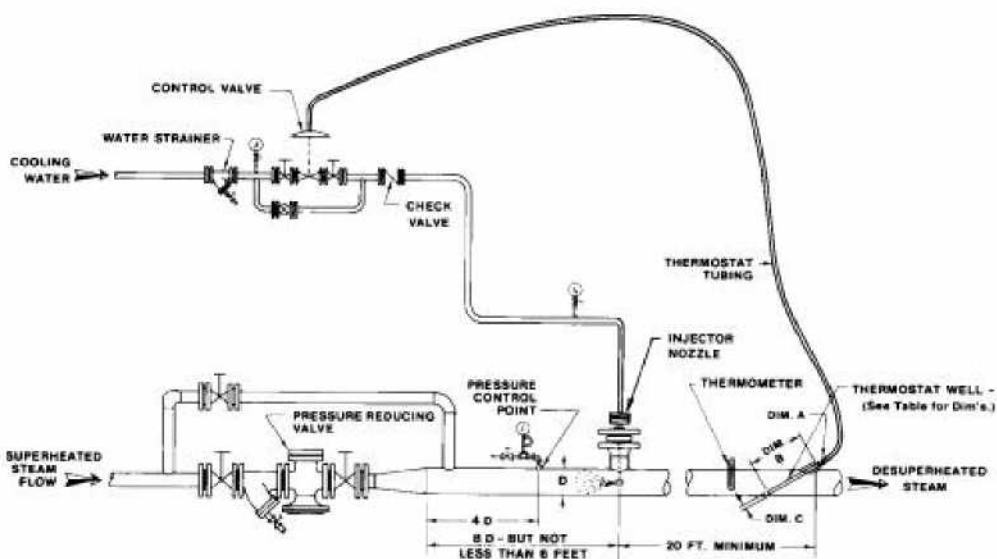
## MECHANICAL ATOMIZING DIRECT OPERATED DESUPERHEATER

### APPLICATION:

Spence mechanical atomizing desuperheaters are designed to reduce and control the temperature of superheated steam by the controlled injection of a finely dispersed spray of cooling water.

### OPERATION:

Water is injected into a superheated steam line through the injector nozzle. The nozzle is designed to break the water into a fine mist to be easily absorbed by the oncoming steam. The flow through the nozzle is controlled by the water control valve, and a vapor tension type thermostat.



**THERMOSTAT WELL DIMENSIONS**

DIM.	728 WELL (700 T°STAT)	729 WELL (701 T°STAT)
A	1"	1 1/4"
B	21 1/8"	17 3/4"
C	3/4"	1 1/8"

### ADVANTAGES:

- Self contained.
- Ease of operation.
- Complete package by Spence.

DESUPERHEATER

APPLICATION GUIDE





# Application Guide

A Division of CIRCOR International, Inc.

SPENCE ENGINEERING COMPANY, INC. 150 GOLDENHAM ROAD, WALDEN, NY 12586-2035

## MECHANICAL ATOMIZING AIR OPERATED DESUPERHEATER

### APPLICATION:

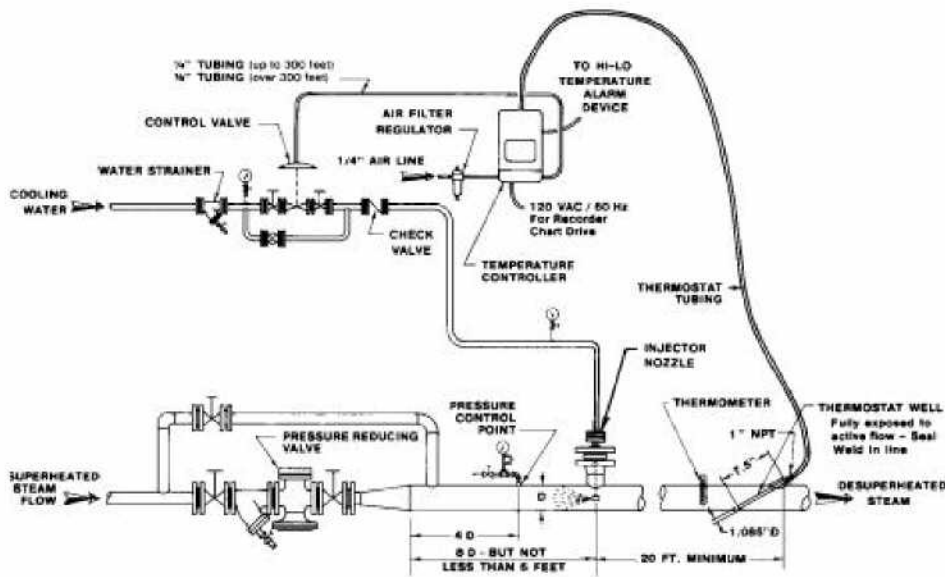
Spence mechanical atomizing desuperheaters are designed to reduce and control the temperature of superheated steam by the controlled injection of a finely dispersed spray of cooling water.

### OPERATION:

Water is injected into a superheated steam line through the injector nozzle. The nozzle is designed to break the water into a fine mist to be easily absorbed by the oncoming steam. The flow through the nozzle is controlled by the dual control valve, and a pneumatic temperature controller.

DESUPERHEATER  
AIR OP/MECH ATOM

APPLICATION GUIDE  
OTHER PRODUCTS



### ADVANTAGES:

- Complete package by Spence.
- Spence Pressure Reducing Valve available.
- Many sizes available.